



LAUREOLA INDUSTRIES



Wire Rope & Fittings

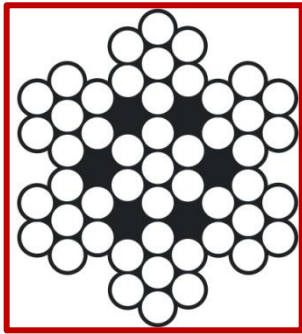
LAUREOLA INDUSTRIES®

PHONE: +1 – 877 – 335 – 7779 (Toll Free)

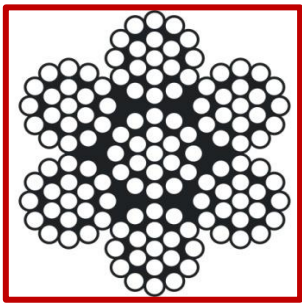
+1 – 302 – 526 – 7002 (USA)

Email: sales@laureolaindustries.com

GALVANIZED AIRCRAFT CABLE



7x7



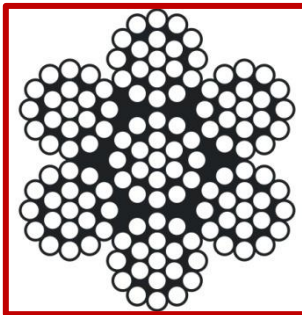
7x19

Size	Style Number	Construction	Weight/1000 ft (LBS)	Breaking Strength (LBS)
1/16"	116-GAL-77	7x7	7	480
3/32"	332-GAL-77	7x7	16	920
1/8"	018-GAL-77	7x7	28	1700
3/16"	316-GAL-77	7x7	62	3700
3/32"	332-GAL-719	7x19	18	1050
1/8"	018-GAL-719	7x19	29	2000
3/16"	316-GAL-719	7x19	65	4200

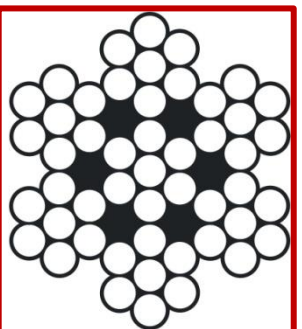
Reel available in stock: 100', 250', 500', 1000', 1500', 2500' and 5000'

STAINLESS STEEL AIRCRAFT CABLE

GRADE 304



7x19



7x7

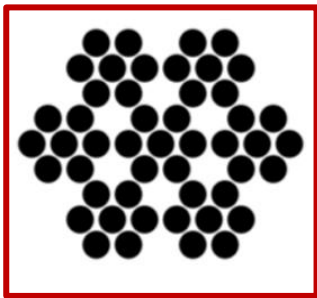
Size	Style Number	Construction	Weight/1000 ft (LBS)	Breaking Strength (LBS)
3/64"	364-SS304-77	7x7	4.2	270
1/16"	116-SS304-77	7x7	7.5	480
5/64"	564-SS304-77	7x7	11	650
3/32"	332-SS304-77	7x7	16	920
1/8"	018-SS304-77	7x7	28	1700
3/32"	332-SS304-719	7x19	18	1050
1/8"	018-SS304-719	7x19	29	2000
3/16"	316-SS304-719	7x19	65	4200

Reel available in stock: 100', 250', 500', 1000', 1500', 2500' and 5000'
Also available in Grade 316

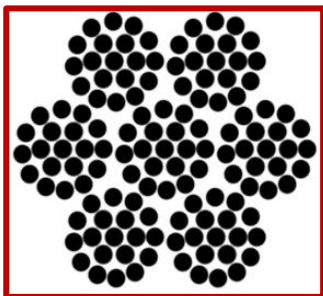
BLACK OXIDE GALVANIZED STEEL CABLE



Black oxide cables are a specialized category of cables known for their distinctive appearance and enhanced durability. These cables undergo a surface treatment process called black oxidation, where a thin layer of black oxide forms on the surface of the cable through a chemical reaction



7x7



7x19

Size	Style Number	Construction	Weight/1000 ft (LBS)	Breaking Strength (LBS)
1/16"	116-BO-77	7x7	7.5	480
3/32"	332-BO-77	7x7	16	920
1/8"	018-BO-77	7x7	28	1700
3/32"	332-BO-719	7x19	16	1050
1/8"	018-BO-719	7x19	29	2000
3/16"	316-BO-719	7x19	65	4200

BLACK OXIDE GIVES CABLE A MATTE BLACK FINISH

Reel available in stock: 100', 250', 500', 1000'

Also available in Stainless steel

Note: Breaking Strength ratings are for comparison purpose only. Actual operating loads may vary, but should not exceed the recommended design factor of 20% of the product breaking strength.

COATED GALVANIZED AIRCRAFT CABLE – 7X7



Vinyl (PVC) Coated Cable -

Vinyl coating is used for general purpose applications due to its aesthetics, ergonomics, protection, and visibility. It can be used in environments including indoors, outdoors, wet, dry, or exposed UV light.

Nylon 6 Polyvinyl

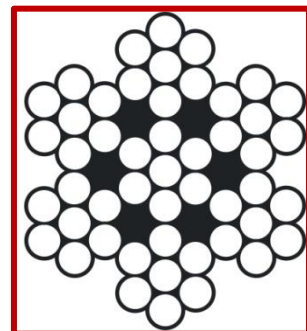


Nylon Coated Cable -

Nylon is a popular mechanical cable coating material as it provides unparalleled cable life, UV protection, abrasion resistance and color-coding.



Cable Diameter (in)	Coated Diameter (in)	Colour	Weight/1000 ft (LBS)	Breaking Strength (LBS)
3/64	1/16	Black, Clear	6	270
1/16	3/32	Black, Clear, Blue, Red, Yellow, Orange, Green, Brown	9.5	480
1/16	1/8	Black, Clear	10	480
3/32	1/8	Black, Clear	22	920
3/32	3/16	Black, Clear	29	920
1/8	3/16	Black, Clear, Red	46.5	1700
3/16	1/4	Black, Clear	79	3700



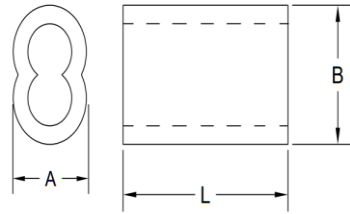
Reel available in stock: 100', 250', 500', 1000', 1500', 2500' and 5000'

ALUMINIUM SWAGE SLEEVES



ALUMINIUM SWAGE SLEEVES

Size	Style Number	DIMENSIONS (inches)			Weight/100 pcs (LBS)
		L	A	B	
3/64"	364-ALSL	0.375	0.140	0.203	0.18
1/16"	116-ALSL	0.375	0.185	0.25	0.25
5/64"	564-ALSL	0.375	0.203	0.312	0.29
3/32"	332-ALSL	0.6	0.278	0.422	0.33
1/8"	018-ALSL	0.675	0.365	0.550	0.66
5/32"	532-ALSL	0.690	0.385	0.575	1.55
3/16"	316-ALSL	1.05	0.466	0.660	2.87
1/4"	014-ALSL	1.165	0.545	0.825	4.24
5/16"	516-ALSL	1.28	0.689	1.042	6.53
3/8"	038-ALSL	1.48	0.82	1.21	9.44



COPPER SWAGE SLEEVES



COPPER SWAGE SLEEVES

Size	Style Number	DIMENSIONS (inches)			Weight/100 pcs (LBS)
		L	A	B	
1/16"	116-CUSL	0.385	0.185	0.25	0.25
3/32"	332-CUSL	0.6	0.278	0.422	0.33
1/8"	018-CUSL	0.675	0.365	0.550	0.66
5/32"	532-CUSL	0.690	0.385	0.575	1.55
3/16"	316-CUSL	1.05	0.466	0.660	2.87
1/4"	014-CUSL	1.165	0.545	0.825	4.24
5/16"	516-CUSL	1.28	0.689	1.042	6.53
3/8"	038-CUSL	1.48	0.82	1.21	9.44

Packaging: Available in different packaging. 25, 50, 100 pcs or Bulk 1000 pcs per carton

When properly machine swaged, Laureola industries™ duplex sleeves hold 100% of the wire rope rated strength (90% for hand-swaged).

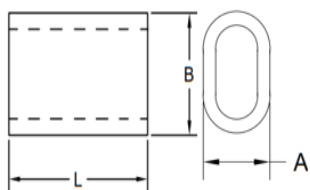
ALUMINIUM STOP SWAGE SLEEVES



ALUMINIUM STOP SWAGE SLEEVES

Size	Style Number	DIMENSIONS (Inches)		Weight/100 pcs (LBS)
		A	B	
3/64"	364-ALRSL	0.173	0.163	0.04
1/16"	116-ALRSL	0.219	0.188	0.06
5/64"	564-ALRSL	0.344	0.313	0.22
3/32"	332-ALRSL	0.344	0.313	0.23
1/8"	018-ALRSL	0.344	0.313	0.25
5/32"	532-ALRSL	0.406	0.313	0.40
3/16"	316-ALRSL	0.438	0.313	0.40
1/4"	014-ALRSL	0.656	0.688	2.10
5/16"	516-ALRSL	0.688	0.688	3.59
3/8"	038-ALRSL	0.688	0.688	3.59

OVAL STAINLESS STEEL SWAGE SLEEVES



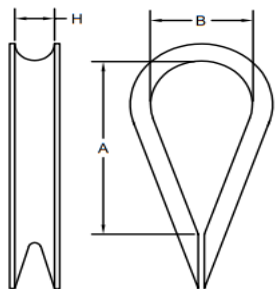
OVAL SWAGE SLEEVES

Size	Style Number	DIMENSIONS			Weight/100 pcs (LBS)
		A	B	L	
1/16"	116-OVSL	0.175	0.250	0.375	0.2
3/32"	332-OVSL	0.250	0.360	0.484	0.3
1/8"	018-OVSL	0.340	0.485	0.625	0.4
5/32"	532-OVSL	0.390	0.560	0.750	1.4
3/16"	316-OVSL	0.455	0.660	0.875	2.3
1/4"	014-OVSL	0.540	0.810	1	4.4

STAINLESS AN THIMBLES GRADE 304



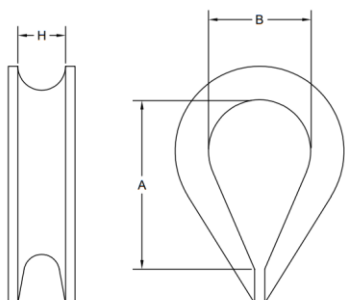
Size	Style Number	DIMENSIONS In.			Weight/100 Pcs (LBS)
		A	B	H	
3/64 - 1/16 - 5/64	116-SSTAN	0.513	0.315	0.104	0.2
3/32 - 7/64 - 1/8	332-SSTAN	0.749	0.454	0.161	0.4
5/32	532-SSTAN	0.768	0.442	0.212	0.4
3/16	316-SSTAN	1	0.500	0.203	1
7/32 - 1/4	014-SSTAN	1.406	0.700	0.266	1.5
9/32 - 5/16	516-SSTAN	1.797	0.900	0.328	3.5
3/8	038-SSTAN	2	1.000	0.391	8.5



STAINLESS STEEL STANDARD WIRE ROPE THIMBLES

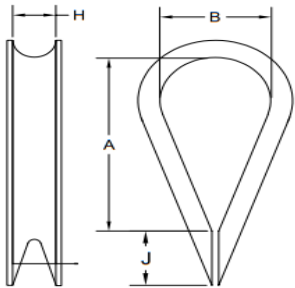


Size	Style Number	DIMENSIONS In.			Weight/100Pcs (LBS)
		A	B	H	
1/8	018-SSTSD	0.749	0.454	0.161	0.6
3/16	316-SSTSD	0.827	0.512	0.236	1.4
1/4	014-SSTSD	1.063	0.591	0.276	2.4
5/16	516-SSTSD	1.496	0.866	0.354	5.6
3/8	038-SSTSD	1.614	0.945	0.394	7.3
1/2	012-SSTSD	2.080	1.142	0.551	13.9
5/8	058-SSTSD	2.638	1.574	0.709	27.6
3/4	034-SSTSD	3.150	1.968	0.866	58.8
7/8	078-SSTSD	3.543	2.205	0.945	62.5
1	111-SSTSD	4.724	2.953	1.181	73.5



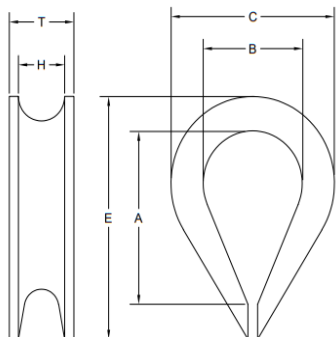
Rigging Hardware

ZINC PLATED GALVANIZED AN WIRE ROPE THIMBLES

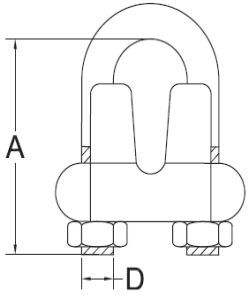


Size	Style Number	DIMENSIONS IN.				Weight/100 Pcs (LBS)
		A	B	H	J	
3/64 - 1/16 - 5/64	116-GALTAN	0.672	0.350	0.094	0.188	0.2
3/32 - 7/64 - 1/8	332-GALTAN	0.703	0.350	0.141	0.219	0.4
5/32	532-GALTAN	0.797	0.400	0.172	0.219	0.6
3/16	316-GALTAN	1	0.500	0.203	0.313	1
7/32 - 1/4	014-GALTAN	1.406	0.700	0.266	0.406	1.5
9/32 - 5/16	516-GALTAN	1.797	0.900	0.328	0.438	3.5
3/8	038-GALTAN	2	1.000	0.391	0.625	8.5

GALVANIZED STANDARD WIRE ROPE THIMBLES



Size	Style Number	DIMENSIONS IN.						Weight/100 Pcs (LBS)
		A	B	C	E	H	T	
1/8 - 5/32	018-GALTSD	1.31	0.69	1.06	1.94	0.16	0.25	3.5
3/16	316-GALTSD	1.31	0.69	1.06	1.94	0.22	0.31	3.5
1/4	014-GALTSD	1.31	0.69	1.06	1.94	0.28	0.38	3.5
5/16	516-GALTSD	1.50	0.81	1.25	2.13	0.34	0.44	4.0
3/8	038-GALTSD	1.63	0.94	1.47	2.38	0.41	0.53	7.5
1/2	012-GALTSD	1.88	1.13	1.75	2.75	0.53	0.69	14.0
5/8	058-GALTSD	2.25	1.38	2.38	3.50	0.66	0.91	36.0
3/4	034-GALTSD	2.50	1.63	2.69	3.75	0.78	1.08	50.0
7/8	078-GALTSD	3.50	1.88	3.19	5.00	0.94	1.27	90.0
1	001-GALTSD	4.25	2.50	3.75	5.69	1.06	1.39	104.0



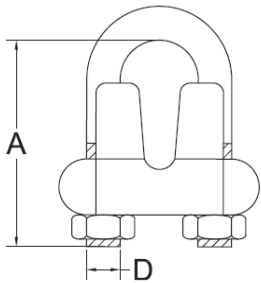
MALLEABLE WIRE ROPE CLIP

Size	Style Number	Minimum Clips Required	Dimensions (inch)		Weight/100 PCS (LBS)
			A	D	
1/16"	116-WRCM-100	3	0.630	8 - 32	2.25
3/32"	332-WRCM-100	3	0.780	10 - 24	3.60
1/8"	018-WRCM-100	3	0.780	10 - 24	4.25
3/16"	316-WRCM-100	3	0.875	10 - 24	7.60



Packaging: 100 pcs or Bulk 1000 pcs per carton

MALLEABLE



STAINLESS STEEL WIRE ROPE CLIP

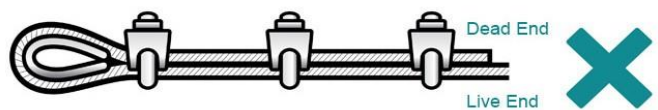
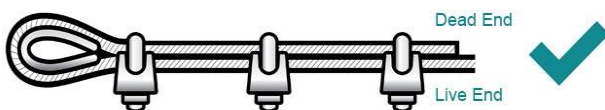
GRADE 304

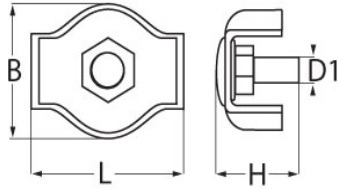
Size	Style Number	Minimum Clips Required	Dimensions (inch)		Weight/PC (LBS)
			A	D	
1/16"	116-WRCSS-100	3	0.602	0.113	0.02
3/32"	332-WRCSS-100	3	0.650	0.146	0.03
1/8"	018-WRCSS-100	3	0.830	0.195	0.04
3/16"	316-WRCSS-100	3	0.945	0.235	0.08



STAINLESS STEEL WIRE ROPE CLIP

To Comply with manufacture's specifications the correct number of clips must be installed correctly and tighten with correct torque. The correct installation technique is shown below.





SIMPLEX WIRE ROPE CLIP

GRADE 304

Size	Style Number	DIMENSIONS (inches)			Weight/PC (LBS)
		B	L	H	
1/16"	116-SWRC	0.46	0.60	0.50	0.011
3/32"	332-SWRC	0.57	0.67	0.50	0.013
1/8"	018-SWRC	0.70	0.80	0.74	0.024



SIMPLEX WIRE ROPE CLIP

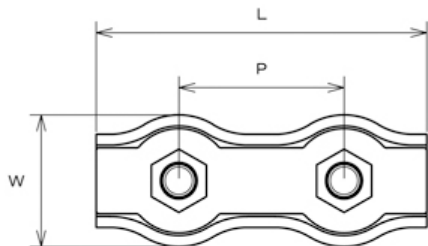
DUPLEX WIRE ROPE CLIP

GRADE 304

Size	Style Number	DIMENSIONS (inches)			Weight/PC (LBS)
		W	P	L	
1/16"	116-DWRC	0.46	0.58	1.18	0.022
3/32"	332-DWRC	0.57	0.67	1.34	0.027
1/8"	018-DWRC	0.70	0.79	1.58	0.049



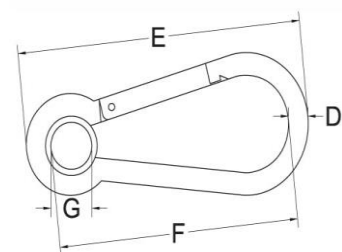
DUPLEX WIRE ROPE CLIP





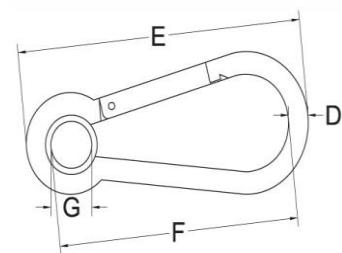
STAINLESS STEEL SNAP HOOKS WITH EYE

SIZE & MATERIAL	STYLE NUMBER	WEIGHT LBS	DIMENSIONS INCHES				
			D		E	F	G
			IN	MM			
3/16" STAINLESS STEEL	341-SHEBM-316	0.04	3/16	5	2	1.625	0.3125
5/16" STAINLESS STEEL	341-SHEBM-516	0.15	5/16	8	3.125	2.5	0.375

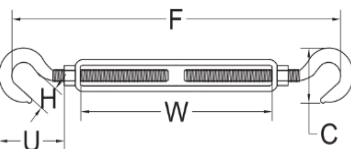


ZINC PLATED SNAP HOOKS WITH EYE

SIZE & MATERIAL	STYLE NUMBER	WEIGHT LBS	DIMENSIONS INCHES				
			D		E	F	G
			IN	MM			
5/16" ZINC PLATED	516-SHEBM	0.15	5/16	8	3.15	2.449	0.315

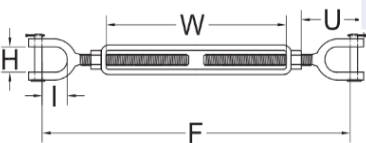


GALVANIZED TURNBUCKLE HOOK & HOOK



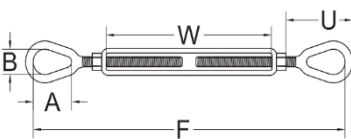
CODE	THREAD DIA x TAKE-UP (in.)	Working Load LIMIT (lbs.)	Weight Each (lbs.)	Dimensions (in.)					
				C	F Open	F Closed	H	U Closed	W
THHG-516 412	5/16 x 4 1/2	700	0.45	1.50	12.81	8.31	0.50	1.94	4.50

GALVANIZED TURNBUCKLE JAW & JAW



CODE	THREAD DIA x TAKE-UP (in.)	Working Load LIMIT (lbs.)	Weight Each (lbs.)	Dimensions (in.)					
				I	F Open	F Closed	H	U Closed	W
TJJG-516 412	5/16 x 4 1/2	800	0.52	0.87	12.36	8.36	0.50	1.98	4.50

GALVANIZED TURNBUCKLE EYE & EYE



CODE	THREAD DIA x TAKE-UP (in.)	Working Load LIMIT (lbs.)	Weight Each (lbs.)	Dimensions (in.)					
				A	F Open	F Closed	B	U Closed	W
TEEG-516 412	5/16 x 4 1/2	800	0.45	0.94	13.56	9.06	0.44	2.09	4.50

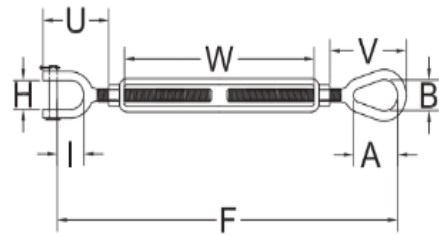


GALVANIZED TURNBUCKLE JAW & EYE

CODE	THREAD DIA x TAKE-UP (in.)	Working Load LIMIT (lbs.)	Weight Each (lbs.)
TJEG-516412	5/16 x 4 1/2	800	0.5

Dimensions (in.)

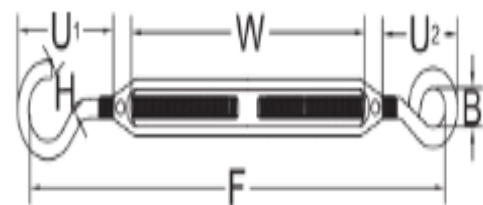
A	B	F Open	F Closed	H	I	U Closed	V Closed	W
0.94	0.44	13.71	8.71	0.5	0.87	1.98	2.09	4.50



ZINC PLATED TURNBUCKLE HOOK & EYE



CODE	THREAD DIA x TAKE-UP (in.)	Working Load LIMIT (lbs.)	Weight Each (lbs.)	Dimensions (in.)					
				B	F Closed	U1 Closed	H	U2 Closed	W
THEZ-516258	5/16 x 2 5/8	150	0.25	0.425	5.75	0.445	0.445	1.3	2.65



LIGHTING SAFETY CABLE



- Safety Cable with Carabiner prevent hazard, especially when lights are hung overhead on a pipe or grid.
- Includes a carabiner to safety hook onto any fixture
- Designed to support temporary load.

These Safety cable with Carabiner has a 5/16" carabiner clip on one end and a loop on the other. Safety cable provides an extra layer of safety and prevents objects from falling in the event that a clamp should fail or is improperly tightened.

Laureola promises to make safety as No.1 priority.



Specification		Size	Style Number	Breaking Strength (LBS)	Package Weight (LBS/10pcs)
Material	Galvanised Steel (Uncoated)				
Diameter	1/8" (3.17mm)				
Color	Silver or Black				
Length	20"(including Carabiner)	18"	018-SC-BK-18	60 lbs (25kgs)	7.5
	18" (Cable length)	30"	018-SC-BK-30	60 lbs (25kgs)	16
	33"(including Carabiner)	18"	018-SC-SV-18	60 lbs (25kgs)	28
	30" (Cable length)	30"	018-SC-SV-30	60 lbs (25kgs)	18
Breaking Strength (LBS)	60 lbs (25kgs)				